

Falls Road Farm

180 Acres – Bell County
(3431 Falls Road – Burlington, TX)



This is a great multiuse ag property. Approximately 140 acres in cultivated farm land can be farmed by the owner or leased out for additional income. The 40 acre home site has a lot of improvements. The charming 3/1 farm house offers a great weekend, starter or retirement home. There is also an RV hookup for visiting guests.



There are multiple barns and loafing sheds for livestock, a stable for horses, a metal workshop, an office and a quaint old barn used for hay and equipment storage.



The 40 acres is fenced and cross-fenced into appx. 8 different pens and pastures and features two ponds. The property is gently rolling with great hilltop views and is located less than a mile off FM485 just 20 +/- minutes to Temple.





Located just off FM 485 West of Hwy 77 - Southeast of Temple

Great property offered at

\$495,000.00



Cunningham Real Estate

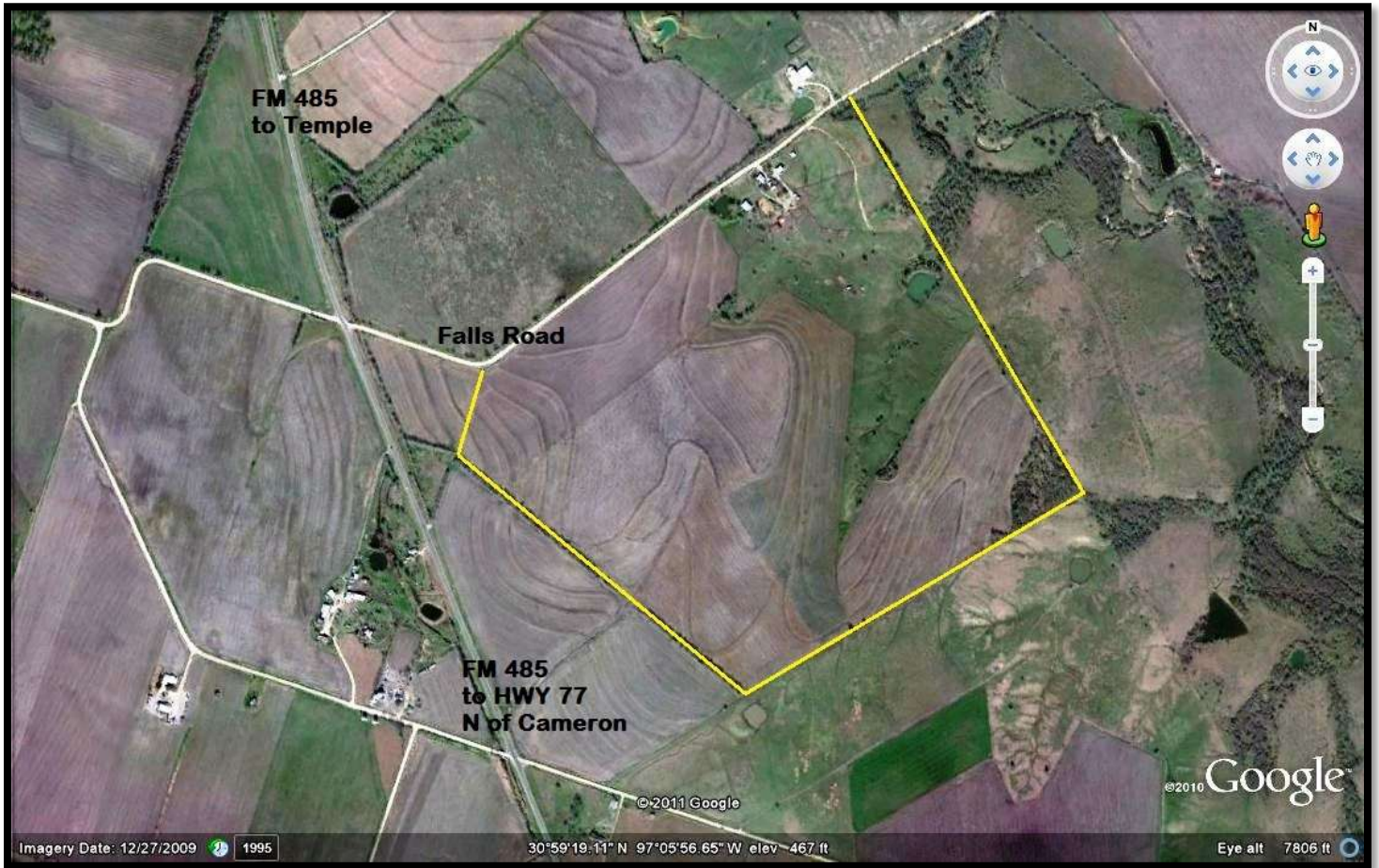
1205 S. Market St - Hearne, TX 77859

www.CunninghamRealEstate.com

(979) 279-2757

ALL INFORMATION CONTAINED IN THESE OFFERINGS, WHILE BASED ON INFORMATION SUPPLIED BY THE OWNER OR FROM OTHER SOURCES DEEMED TO BE RELIABLE, IS NOT IN ANY WAY WARRANTED BY CUNNINGHAM REAL ESTATE. THESE OFFERINGS ARE SUBJECT TO PRIOR SALE, CHANGE IN PRICE OR TERMS AND WITHDRAWAL WITHOUT NOTICE.





Shown By Appointment Only –



Cunningham Real Estate

1205 S. Market St - Hearne, TX 77859

www.CunninghamRealEstate.com

(979) 279-2757

ALL INFORMATION CONTAINED IN THESE OFFERINGS, WHILE BASED ON INFORMATION SUPPLIED BY THE OWNER OR FROM OTHER SOURCES DEEMED TO BE RELIABLE, IS NOT IN ANY WAY WARRANTED BY CUNNINGHAM REAL ESTATE. THESE OFFERINGS ARE SUBJECT TO PRIOR SALE, CHANGE IN PRICE OR TERMS AND WITHDRAWAL WITHOUT NOTICE.